

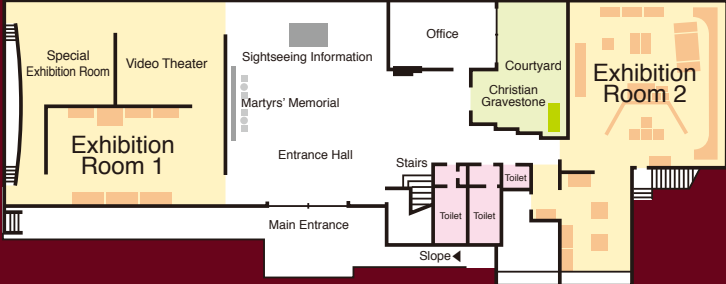
Admission

Category	Individual	Group
Adult	¥300	¥250
HS student	¥200	¥150
ES/JHS student	¥150	¥100

* Discounts available for groups of 20 or more and for people with disabilities, etc.



Museum Map



Commemorative seal

Access Map

By car:
45 min. from Shimabara City
75 min. from Isahaya IC
100 min. from Nagasaki City
100 min. from Nagasaki Airport

By train and bus:
65 min. from Isahaya Stn. on the Shimabara Railway Line to Shimabara Stn. →
60 min. by Shimatetsu Bus to Minamiarima Chosha-mae Bus Stop →
15 min. on foot

By bus:
Bus bound for Kuchinotsu via Obama from the Isahaya Bus Terminal →
Change buses at Kuchinotsu and a 20 min. ride to Minamiarima Chosha-mae Bus Stop →
15 min. on foot

By ferry:
20 min. from Kuchinotsu Port by Shimatetsu Bus →
45 min. from Shimabara Outer Port by Shimatetsu Bus →
65 min. from Taira Port by Shimatetsu Bus



Arima Christian Heritage Museum

Address: 1395 Otsu, Minamiarima-cho, Minamishimabara City,
Nagasaki Prefecture 859-2412
Hours: 9 am to 6 pm
Closed: Thursdays, Dec. 29 to Jan. 3
TEL: 0957-85-3217 / FAX: 0957-85-3217
Email: arimamuseum3217@gmail.com
Parking: 100 spaces (free) * Including neighboring parking lots
<http://www.city.minamishimabara.lg.jp/sekaiisan/>

Arima Christian Heritage Museum

The **bright** and **dark** sides
of Christian history



Arima Christian Heritage Museum



Minamishimabara City,
Nagasaki Prefecture

Arima Christian Heritage Museum

The Arima Christian Heritage Museum houses an informative exhibition on the history of Christianity in Minamishimabara centered on the Remains of Hara Castle, one of the component properties of the UNESCO Cultural World Heritage site “Hidden Christian Sites in the Nagasaki Region.” The exhibition is designed to provide visitors with clear explanations of this history, from the Remains of Hinoe Castle, representing a time of prosperity following Christianity's arrival in this region, to the subsequent period of Christian oppression and the Shimabara-Amakusa Rebellion. By visiting this museum along with the sites, you will gain a better understanding of their history's value.



World Cultural Heritage
Hidden Christian Sites
in the Nagasaki Region

“Hidden Christian Sites in the Nagasaki Region” bears unique testimony to the traditions of Hidden Christians who secretly retained their faith in Christianity while surviving alongside conventional society and its religions, such as Buddhism and Shintoism, in the absence of missionaries due to the ban on Christianity. The twelve component sites, including the Remains of Hara Castle, are located in six cities and two towns in Nagasaki Prefecture and Kumamoto Prefecture.



Remains of Hara Castle

Minamishimabara – Prosperity and Christian Culture

Exhibition Room 1

This exhibition introduces the prosperity of Christianity with Hinoe Castle as its center in the 16th and 17th centuries. The exhibition provides a detailed explanation of the work of the missionary Valignano, the European Seminario (Seminary) education system which was introduced during the Warring States period, the role of the Tenshō Embassy, Hinoe Castle and the unearthed remains of steps.

Main exhibits

- Gilded roof tile
- Wooden statue of Arima Harunobu
- Letterpress printing machine (scale model)
- Copperplate print “Our Lady of Seville”



Wooden statue of Arima Harunobu



Gilded roof tile

“Valignano”
by Kashiwamoto Ryuta

Copperplate print “Our Lady of Seville”



Remains of Hinoe Castle

Exhibition Room 2

Having suffered from famine and heavy taxes, the people of the Arima and Amakusa domains exacerbated the discontent, leading to the outbreak of Shimabara-Amakusa Rebellion in 1637. This exhibition room displays historical materials both from the region and overseas, as well as artifacts found through excavation surveys, showing how the rebellion was provoked. It also details the course of events that led to the end of Christian oppression after 250 years of hiding following the Shimabara-Amakusa Rebellion.

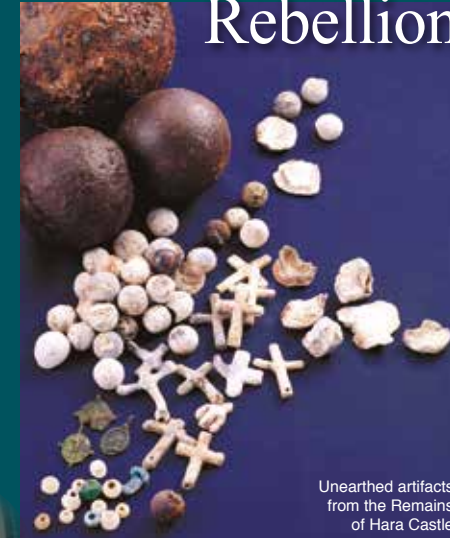
Main exhibits

- Crucifix, Medals, Rosary Beads, Artillery Shells
- Main enclosure front gate Replica of excavated human bones in-situ
- Roof tile with Dragon Gargoyles, Roof tile with Flower Cross Design
- Ākāśagarbha statue (mounted as a scroll)
- Letter affixed to an arrow from the collection of the Tsuboi family



Unearthed artifacts
from the Remains
of Hara Castle

Christian Oppression and the Shimabara-Amakusa Rebellion



Remains of Hara Castle



“Amakusa Shiro”
by Kashiwamoto Ryuta